



5 STEPS

TO SET UP YOUR JUST GIVING PAGE

It's really quick and easy to set up a Fundraising Page for Hospice Isle of Man. Just follow the steps below to create your page



1. Ready, Set, Log In!

Go to JustGiving and log into your account. If you haven't already got an account you will need to Sign Up. Once logged in click 'Start Fundraising'



2. Find Us, Fund Us, Make a Difference

Search for Hospice Isle of Man - Please note: If you are raising funds for Rebecca House Children's Hospice you will need to select Hospice Isle of Man but please be assured that all funds raised for Rebecca House will be used for Rebecca House.



3. What's Your Fundraising Story?

Let us know whether you're taking part in an event, celebrating an occasion, fundraising in memory or doing your own thing. Please remember that Gift Aid is not applicable in the Isle of Man.



4. Got a Different Idea?

If you can't see your event listed, select 'Add your own' at the bottom of the page and tell us a bit more about your activity. Choose your web address – this is the link you'll be sharing with friends and family when asking them to donate.



5. Ready? Click Create Your Page!

Your fundraising page is now set up and ready to accept donations. Just Giving will send the money that you raise to Hospice Isle of Man on a weekly basis. Now you can start on the fun stuff – personalising your page and sharing it friends and family.

For more information or to chat through any of these ideas, please contact the fundraising team on **01624 672222** or email **fundraising@hospice.org.im**



Hospice
ISLE OF MAN



5 STEPS

TO SET UP YOUR ENTHUSE PAGE

It's really quick and easy to set up a Fundraising Page for Hospice Isle of Man. Just follow the steps below to create your page



1. Ready, set, log in!

Visit our website on hospice.enthuse.com/profile - click 'Create a team or Fundraise for us' located on the top right of the page which will direct you to sign up via Facebook or your email.



2. Tell us about you and what you are fundraising for

Start by entering your name, country and address. On the next page, you'll be asked to provide the name of the person you're creating the memorial page for or the team page you are creating/taking part in, along with your fundraising goal amount.



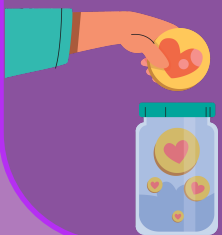
3. Make it personal (Add photos, your story & preferences)

You can upload a profile picture or team logo now or leave it until later if you prefer. The same goes for your header image—choose one that feels right or come back to it when you're ready. Next, bring your page to life by writing your story. Add a page title and share why you're fundraising. You'll also have the option to customise your page link, creating a unique URL that's easy to share.



4. You're all set – share your page

Finally, let us know how you'd like to hear from Hospice—by email, text, or you can opt out altogether. Your page is now complete! You can start sharing your fundraising link with family and friends right away. If you'd like to make any changes, you can easily edit and preview your page at any time.



5. Donations & page features

Your donation page will display your personalised header at the top, along with your profile picture/team logo and the story or memories you've shared. When supporters visit your page, they can click the "Donate" button to contribute. They'll be able to choose from a one-off donation or set up regular giving—monthly, quarterly, or yearly.

For more information or to chat through any of these ideas, please contact the fundraising team on **01624 672222** or email fundraising@hospice.org.im



Hospice
ISLE OF MAN